
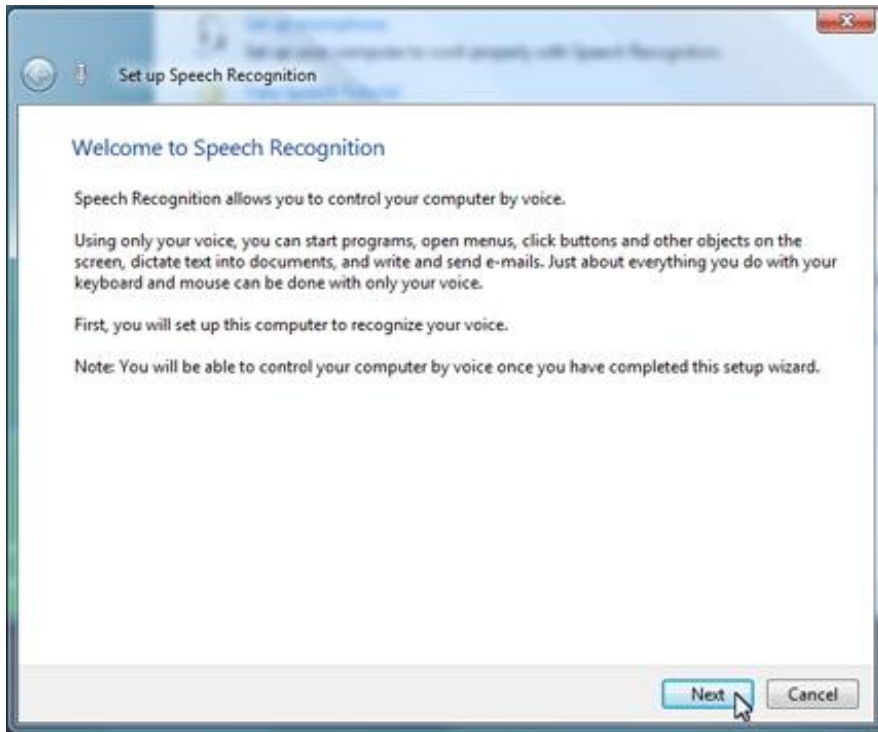


Start Using Speech Recognition

Speech Recognition allows you to control your computer by voice. Using only your voice, you can start programs, open menus, click buttons and other objects on the screen, dictate text into documents, and write and send e-mails. Just about everything you do with your keyboard and mouse can be done with only your voice.


This tutorial shows you how to **Start Speech Recognition** the first time you use Speech Recognition, and to set it to turn on each time you log on.

No.	Mouse actions	Keyboard actions
1	<p>On the Start menu, select:</p> <ul style="list-style-type: none">• Control Panel.• Ease of Access.• Speech Recognition.	<p>Display the Start menu by pressing the Windows logo key , then select.</p> <ul style="list-style-type: none">• Control Panel by pressing the arrow keys, then ENTER.• Ease of Access by pressing the arrow keys, then ENTER.• Speech Recognition Options by pressing the arrow keys, then ENTER.
2	<p>In Configure your Speech Recognition experience, select:</p> <ul style="list-style-type: none">• Start Speech Recognition. <p>The first time you select Start Speech Recognition you'll be taken through setting up your microphone and the Speech Tutorial. You'll also be given the option to set Speech Recognition to start each time you log on to your computer.</p>	<p>In Configure your Speech Recognition experience, select:</p> <ul style="list-style-type: none">• Start Speech Recognition by pressing ALT+S. <p>The first time you select Start Speech Recognition you'll be taken through setting up your microphone and the Speech Tutorial. You'll also be given the option to set Speech Recognition to start each time you log on to your computer.</p>



Set up microphone

Proper set up of your microphone will make your speech recognition interaction more effective.

No.	Mouse actions	Keyboard actions
1	On the Start menu , select: <ul style="list-style-type: none"> • Control Panel. • Ease of Access. • Speech Recognition. 	Display the Start menu by pressing the Windows logo key  , then select. <ul style="list-style-type: none"> • Control Panel by pressing the arrow keys, then ENTER. • Ease of Access by pressing the arrow keys, then ENTER. • Speech Recognition Options by pressing the arrow keys, then ENTER.
2	In Configure your Speech Recognition experience , select:	In Configure your Speech Recognition experience , select: <ul style="list-style-type: none"> • Set up microphone by pressing

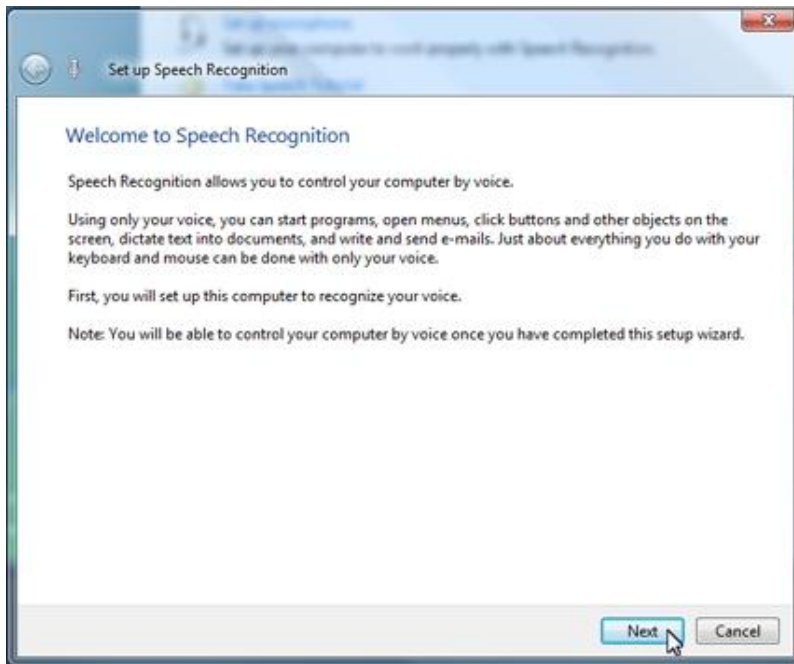
No.	Mouse actions	Keyboard actions
	<ul style="list-style-type: none"> • Set up microphone. 	ALT+M.
3	<p>In the Microphone Setup Wizard:</p> <ul style="list-style-type: none"> • Select the type of microphone you will use for Speech Recognition. • Select Next. <p>Read about and adjust your microphone as directed.</p> <ul style="list-style-type: none"> • Select Next. <p>Read the text to adjust the microphone volume.</p> <ul style="list-style-type: none"> • Select Next. • Select Finish to complete the wizard. 	<p>In the Microphone Setup Wizard:</p> <ul style="list-style-type: none"> • Select the type of microphone you will use for Speech Recognition by pressing TAB. • Select Next by pressing ALT+N. <p>Read about and adjust your microphone as directed.</p> <ul style="list-style-type: none"> • Select Next by pressing ALT+N. <p>Read the text to adjust the microphone volume.</p> <ul style="list-style-type: none"> • Select Next by pressing ALT+N. • Select Finish by pressing TAB, then ENTER to complete the wizard.



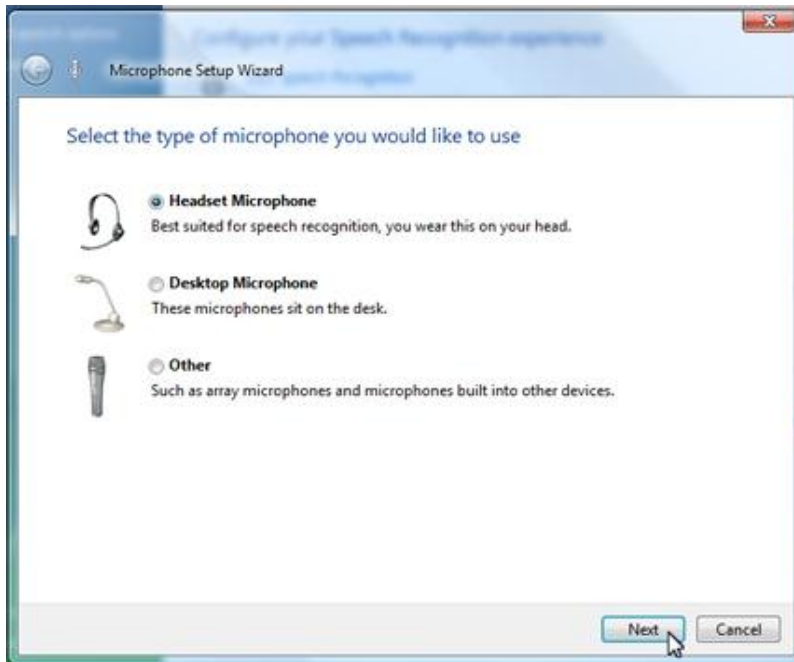
Windows Speech Recognition



Windows Speech Recognition in Windows Vista empowers users to interact with their computers by voice. It was designed for people who want to significantly limit their use of the mouse and keyboard while maintaining or increasing their overall productivity. You can dictate documents and emails in mainstream applications, use voice commands to start and switch between applications, control the operating system, and even fill out forms on the Web.



Windows Speech Recognition is a new feature in Windows Vista, built using the latest Microsoft speech technologies. Windows Vista Speech Recognition provides excellent recognition accuracy that improves with each use as it adapts to your speaking style and vocabulary. Speech Recognition is available in English (U.S.), English (U.K.), German (Germany), French (France), Spanish (Spain), Japanese, Chinese (Traditional), and Chinese (Simplified).



With Windows Speech Recognition, you are empowered right from the start; a guided setup and an interactive training experience familiarize you with key concepts and commands. Windows Speech Recognition also features an innovative, natural user interface that efficiently assists you in controlling your computer by voice. Whether you are starting an application, selecting a word, or correcting a sentence, you are always in control and Windows Speech Recognition smoothly guides you to completing the task at hand.


Windows Speech Recognition—Key Features

Features	Description
Commanding	"Say what you see" commands allow you to naturally control applications and complete tasks, such as formatting and saving documents; opening and switching between applications; and opening, copying, and deleting files. You can even browse the Internet by saying the names of links. ➔Featured in demo
Correction	Efficiently fix incorrectly recognized words by selecting form alternatives for the dictated phrase or word or by spelling the word. ➔Featured in demo
Dictation	Dictate emails and documents and make corrections and save your work by voice. ➔Featured in demo

Disambiguation	Easily resolve ambiguous situations with a user interface for clarification. When you say a command that can be interpreted in multiple ways, the system clarifies what you intended.
"How do I" help (U.S. English only)	You can say "How do I" followed by a task you want to perform with your computer. For example, "How do I change my desktop background?"
Innovative user interface	The new user interface provides a simple and efficient experience for dictating and editing text, correcting mistakes, and controlling your computer by voice.
Interactive tutorial	The Interactive speech recognition tutorial teaches you how to use Windows Vista Speech Recognition and teaches the recognition system what your voice sounds like. ⇒ Learn how
Personalization (adaptation)	Ongoing adaptation to both your speaking style and accent continually improves speech recognition accuracy. ⇒ Learn how
Support for multiple languages	English (United States), English (United Kingdom, German (Germany), French (France), Spanish (Spain), Japanese, Traditional Chinese, and Simplified Chinese.

Train your computer to better understand you

Carefully training your computer to better understand you will make your speech recognition experience smoother and more effective.


No.	Mouse actions	Keyboard actions
1	On the Start menu , select: <ul style="list-style-type: none"> • Control Panel. 	Display the Start menu by pressing the Windows logo key  , then select.

No.	Mouse actions	Keyboard actions
	<ul style="list-style-type: none"> • Ease of Access. • Speech Recognition. 	<ul style="list-style-type: none"> • Control Panel by pressing the arrow keys, then ENTER. • Ease of Access by pressing the arrow keys, then ENTER. • Speech Recognition Options by pressing the arrow keys, then ENTER.
2	<p>In Configure your Speech Recognition experience, select:</p> <ul style="list-style-type: none"> • Train your computer to better understand you. 	<p>In Configure your Speech Recognition experience, select:</p> <ul style="list-style-type: none"> • Train your computer to better understand you by pressing ALT+R.
3	<p>In Voice Training:</p> <ul style="list-style-type: none"> • Read the Welcome to Speech Recognition Voice Training screen. • Select Next. • Read the training text that appears on screen (it only takes a few minutes). <p>After completing the first training you'll be given an opportunity to read more text to further train Speech Recognition to understand your commands and dictation. The more you train it, the better it will work.</p> <ul style="list-style-type: none"> • Select More Training. • Read the training text that appears on screen. • Select Finish. 	<p>In Voice Training:</p> <ul style="list-style-type: none"> • Read the Welcome to Speech Recognition Voice Training screen. • Select Next by pressing ALT+N. • Read the training text that appears on screen (it only takes a few minutes). <p>After completing the first training you'll be given an opportunity to read more text to further train Speech Recognition to understand your commands and dictation. The more you train it, the better it will work.</p> <ul style="list-style-type: none"> • Select More Training by pressing ALT+M. • Read the training text that appears on screen. • Select Finish by pressing ALT+F.

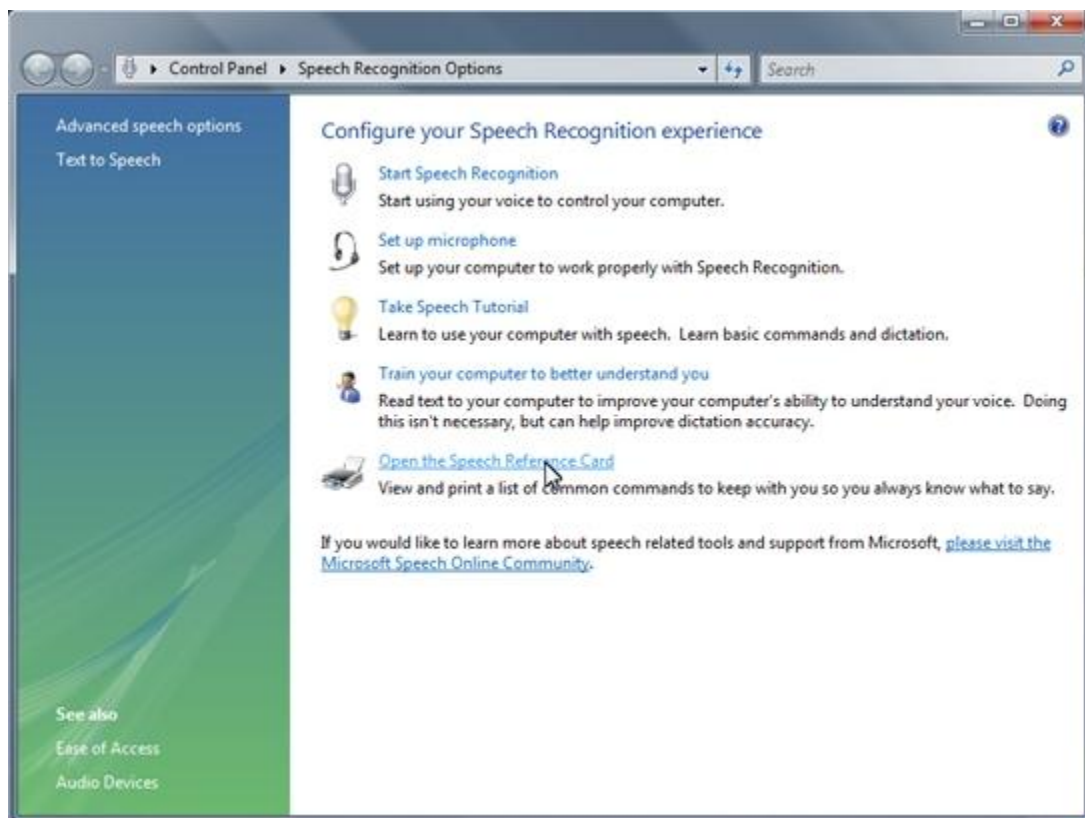


Open the Speech Reference Card

Always available is a list of speech recognition commands you can access on screen, or print.


No.	Mouse actions	Keyboard actions
1	<p>On the Start menu, select:</p> <ul style="list-style-type: none"> • Control Panel. • Ease of Access. • Speech Recognition. 	<p>Display the Start menu by pressing the Windows logo key , then select.</p> <ul style="list-style-type: none"> • Control Panel by pressing the arrow keys, then ENTER. • Ease of Access by pressing the arrow keys, then ENTER. • Speech Recognition Options by pressing the arrow keys, then ENTER.
2	<p>In Configure your Speech Recognition experience, select:</p> <ul style="list-style-type: none"> • Open the Speech Reference Card. 	<p>In Configure your Speech Recognition experience, select:</p> <ul style="list-style-type: none"> • Open the Speech Reference Card by pressing ALT+C.

No.	Mouse actions	Keyboard actions
3	<p>In Windows Help and Support, select:</p> <ul style="list-style-type: none"> • Show All to display all of the Speech Recognition shortcuts. <p>If you want to print a copy, select:</p> <ul style="list-style-type: none"> • Print icon to begin printing the list. 	<p>In Windows Help and Support, select:</p> <ul style="list-style-type: none"> • Show All to display all of the Speech Recognition shortcuts by pressing TAB, then ENTER. <p>If you want to print a copy, select:</p> <ul style="list-style-type: none"> • Print by pressing CTRL+P, then ENTER.



Advanced speech options

There are a number of options in Windows Speech Recognition that you can adjust to make speech recognition more efficient.

No.	Mouse actions	Keyboard actions
1	<p>On the Start menu, select:</p> <ul style="list-style-type: none"> • Control Panel. • Ease of Access. • Speech Recognition. 	<p>Display the Start menu by pressing the Windows logo key , then select.</p> <ul style="list-style-type: none"> • Control Panel by pressing the arrow keys, then ENTER. • Ease of Access by pressing the arrow keys, then ENTER. • Speech Recognition Options by pressing the arrow keys, then ENTER.
2	<p>To the left of Configure your Speech Recognition experience, select:</p> <ul style="list-style-type: none"> • Advanced Speech Options. 	<p>To the left of Configure your Speech Recognition experience, select:</p> <ul style="list-style-type: none"> • Advanced Speech Options by pressing ALT+A.
3	<p>On the Speech Recognition tab:</p> <ul style="list-style-type: none"> • Under Language, select the language you want Speech Recognition to use (if you have more than one installed). • Under Recognition Profiles select your profile from the list of computer users (or default if you are the only user). <p>Note: You can add a profile by selecting the New button and following the prompts to create a new profile and train the computer on your voice.</p>	<p>On the Speech Recognition tab:</p> <ul style="list-style-type: none"> • Under Language, select the language you want Speech Recognition to use (if you have more than one installed), by pressing ALT+L and the arrow keys. • Under Recognition Profiles select your profile from the list of computer users (or default if you are the only user), by pressing ALT+P and the arrow keys. <p>Note: You can add a profile by selecting the New button, by pressing ALT+N, and then following the prompts to create a new profile and train the computer on your voice (use ALT+the underlined key to select a command).</p>
4	<p>Under User Settings select from these options:</p> <ul style="list-style-type: none"> • Run Speech Recognition at startup if you want Speech Recognition to turn on for your user profile when you log in. • Allow computer to review your documents and mail to improve speech recognition 	<p>Under User Settings select from these options:</p> <ul style="list-style-type: none"> • Run Speech Recognition at startup if you want Speech Recognition to turn on for your user profile when you log in, by pressing ALT+R. • Allow computer to review your documents and mail to improve speech recognition accuracy, by pressing ALT+O.

No.	Mouse actions	Keyboard actions
	<p>accuracy.</p> <ul style="list-style-type: none"> • 1 or 2 spaces to insert after punctuation when you're dictating. • Configure Microphone if you have not yet configured the microphone you will be using for Speech Recognition. Then, follow the wizard prompts to complete the configuration. • Select OK. 	<ul style="list-style-type: none"> • 1 or 2 spaces to insert after punctuation when you're dictating, by pressing ALT+P and the arrow keys. • Configure Microphone if you have not yet configured the microphone you will be using for Speech Recognition, by pressing ALT+C. Then, follow the wizard prompts to complete the configuration (use ALT+the underlined key to select a command). • Select OK by pressing TAB, then ENTER.

