



SVECC Newsletter

Sunland Village East Computer Club

January 2011

Volume 8 Issue 1

Inside this issue:

Photo Contest	2
Photo Contest	3
Note pad	4
System Backup	4
E-mail hacked?	5
Calendar	7
Exit laughing	8

Monthly Reminders:

- Run Disk Cleanup
- Run CC Cleaner
- Defrag your hard drive
- Manually Update Windows
- Update Malwarebytes
- Run your Anti-virus

New Years Resolutions

Here are My suggestions for your 2011 Computer resolutions

1. Stop the thoughtless forwarding of e-mails that have been sent to you.
2. Tell your friends to do the same.
3. Cleanup the headers and trailers of the e-mails that you do forward.
4. Tell your friends to do the same.
5. Keep your computer updated, check each month on Patch Tuesday to insure that this is happening.
6. Update your anti-virus, and if you don't know how take the time to find out.
7. Update your anti-malware and

again if you do not know how then find out.

8. Defrag your computer at least once a month.
9. Run Ccleaner at least once a month.
10. When in doubt don't. If you do not understand a message from your computer find out about it before clicking on the OK selection.
11. Be careful what sites you visit. It is very dangerous to click on links in e-mails without knowing the results.
12. Take a class in computer operation that fits your experience level.
13. Attend as many club meetings as

your schedule will allow.

14. Ask questions. If you feel the Q & A is over your head then ask your own question. You may be surprised at how many of you fellow members wanted to know the same thing that you did.
15. Volunteer. We need experienced and unexperienced alike. Your background may bring new light to the activities of the club, and have a big impact on what direction the club takes in the future.

Thanks for your support.

jz



Photo Show March 6th

2ND ANNUAL SVECC PHOTO SHOW



The SVECC Photo SIG is hosting the 2nd annual SVECC Photo Show on Sunday, March 6, 2011 from 1 to 4 PM in the Oakwood Room. Submission of photos will be open only to SVE Computer Club members.

Members can submit a maximum of (2) photos (taken by themselves) in any of the following categories, with a maximum of 10 entries total per person:

ANIMALS

Live large and small animals, pets and fish are acceptable. No portraits of owners and pets; they will be placed in the "People" category. No people allowed unless unavoidable in background.

PEOPLE

Will be the subject/focus of the photo: People and their pets will go here.

PLANTS/FLOWERS

Will include live trees and cactus.

SCENIC WITH WATER

Rural or open countryside type scenes. Water is present in the scene. Shorelines acceptable; marinas, lighthouses and watercraft are OK. Sunsets are OK. Predominantly nature scenes are preferred but an occasional farm outbuilding, fence, small bridge, secondary road, dock or other manmade item is OK as long as item is not main focus of photo.

SCENIC WITHOUT WATER

Rural or open countryside type scenes. Water is not part of the scene. Sunsets are OK. Predominantly nature scenes are preferred but an occasional farm outbuilding, fence, small bridge, secondary road or other manmade item is OK as long as item is not main focus of photo.

STRUCTURES AND MACHINES

Buildings, street scenes, bridges, modes of transportation, amusement rides, statues, monuments, etc. People in scene OK as long as not main subject/focus of scene.

ANIMALS WITH WINGS

Birds and insects with wings; butterflies, dragonflies and bees, etc. Subject doesn't have to be in

flight; they just need to have wings. No people allowed in the shot unless unavoidable in background.

ANIMALS

Live large and small animals, pets and fish are acceptable.

No portraits of owners and pets; they will be placed in the "People" category.



Photo Show March 6th

8. OPEN/MISCELLANEOUS

Entries that DO NOT FIT the descriptions of any of the other AVAILABLE CATEGORIES. For example: if the subject/focus of the photo is an animal or a flower, then the animal or flower must go in the "Animals" or the "Plants/Flowers" category, respectively. Qualifying photos include Still Life, photos modified beyond normal photo touchup or are "other-worldly". Sports photos combining people & animals are acceptable. Other subjects included in this category are holiday decorations, museum/art objects, toys and garden ornaments.

Photos for submission shall be in 8X10 size, matted to 11X14 in submitter's choice of mat (no frames) and may be formatted in landscape or portrait mode. Colorized, B&W or monochrome and sepia are acceptable in any category. Complete the SVECC Photo Show Entry Form and tape it to the back of the photo/mat in the bottom center.

A new requirement for this year will be that all photos will have a solid "backer" in addition to the mats for better stability. (These can be purchased online or at hobby stores and/or fashioned out of cardboard).

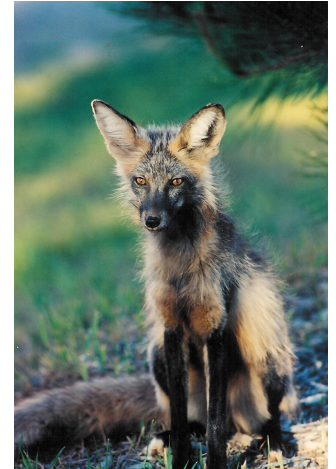
A digital jpg copy of each entry must be submitted in addition to your prints for promotional purposes. Please email a jpg copy of each of your submissions to sveccphotoSIG@gmail.com. Please include your full name, phone number, the photo's title and the preferred category for each photo.

Ineligible Photo Entries: Any photo which was a First Place Winner or an Honorable Mention in any category in a prior SVECC Annual Show is excluded from competition

Deadline for submission is February 21, 2011. Submissions must be delivered to a Photo SIG representative at any 9 AM Computer Club meeting or Photo SIG meeting prior to the deadline for inclusion in the exhibit. Call Rob (480 984-4138) or Norma (480 354-9326) with any questions.

All are welcome to attend the exhibit on Sunday, March 6th in the Oakwood Room. Attendees can vote for their favorites in each category.

The SVECC Photo SIG (Special Interest Group) is a subgroup of the Computer Club devoted to digital photography. The Show Committee reserves the right to combine categories if there are insufficient submissions, and has final say on the category of each submission. Submitters should pick up their photos at the close of the show March 6 in the Oakwood Room.



A digital jpg copy of each entry must be submitted in addition to your prints for promotional purposes.





Did you know notepad can?

Plain old boring Notepad, the text editor that comes with Windows, is not quite as stodgy as you might think. It has a couple of tricks up its sleeve. Here are three things you might not have known Notepad could do.

Create a log file with an automatic date and time stamp

You can create a file that adds the current date and time each time the Notepad file is opened. For example, this could be used to create a log of any changes you make to your computer.

1. Open Notepad.
2. Type .LOG on the first line (don't forget the period at the front), and then press ENTER to move to the next line.

3. Save the file in a convenient location with some descriptive name.

When you next open the file, you'll see that the date and time have been added to the end of the log, just before the place where new text can be added. Every time you open the file, a new date and time will be added.

Every computer should be backed up so that your computers' hard drive is adequately protected

February 7th Presentation "the best backup plan"

Every computer should be backed up so that your computers' hard drive is adequately protected and can recover from any unforeseen events, such as hard drive failures, viruses or unstable software downloads. By having & implementing a well thought-out Backup and Recovery Plan, you can put your system together again fairly quickly, instead of days or weeks of rebuilding the system. Gene will demonstrate Acronis True Image Home 2011, the latest version of this popular computer backup and recovery program. This is an important topic that every end-user should understand.

Gene will also spend a

few minutes at the end of his presentation focusing on the best way to Organize Your Hard Drive. Acronis just released a new version of their partitioning product, Disk Director 11 Home with support for the Windows7 OS. Large terabyte hard drives today can be set up & organized to take advantage of the additional space. This can be done very easily with a special "partitioning utility", like Acronis Disk Director, making this organization process easy and simple to do. The combination of one or both of these excellent hard drive utilities will give you the power to Protect Your Hard Drive from system failure and Organize Your Hard

Drive for better safety of your data files.

Gene has been a presenter in the user group community for over 28 years. For many years he managed IBM's user group support organization and has been called the Father of PC User Groups. Now retired, Gene, and his wife Linda, started their own company called User Group Relations (www.ugr.com), providing support to the user group community for the software companies they represent. He is an informative and easy to understand presenter.

Don't miss this important presentation.

February 7th 2011



My e-mails been hacked (or has it)

Question

If an email account has been hacked, is it advisable to delete the old account to keep it from continuing to be used, or is it too late?

Answer

There is much confusion about what many perceive as having their e-mail account 'hacked'.

When I hear that term in that context, I envision an e-mail account that has been taken over by a third-party and the rightful owner has been locked out.

If a 'hacker' wants to gain access to your e-mail account, it's for nefarious purposes and if they don't lock you out, you can easily lock them out once you realize something funny is going on (being locked out is standard operating procedure in 'hacking' an account).

If you have been locked out, you can't shut down the account until you regain control of it and depending upon which e-mail service you are using, doing so can be fairly easy to impossible. If you are part of a corporate mail system or a national Internet Service Provider, contact the tech support departments to work through the process of regaining control of the account.

If you are using a free-mail system like Yahoo! Mail and Gmail, they required you when you originally setup the account to designate a 'primary' e-mail address (usually on another system) in case you forget

or need to reset your password.

If you can't use this method to regain access, then the 'hacker' has already changed the primary e-mail address (the one that allows you to reset) to something they control, so you'll need to report it to the mail service provider.

If you still have access to the account but think someone else may have the password and is using the account to send unauthorized messages, you need only to look in the 'Sent' folder to see if any messages that were sent aren't familiar.

If you see anything along those lines, make sure to change the password immediately so they can't continue to access the account.

A more common scenario that causes many to proclaim that their e-mail address has been 'hacked' is actually the simple tactic of 'spoofing' the return address on messages.

It's the same lack of control with standard postal service mail; anyone can jot down any address as the 'sender' without any way to verify if it's true and drop the mail into any mailbox.

E-mail spoofing is a common tactic with spammers because you are more likely to open a message from an e-mail account that you recognize.

Most Internet Service Providers and spam detection systems employ a process that tries to validate the senders address via the 'header' tucked inside of

every message, but it's pretty easy to fool these filters into thinking the message is righteous.

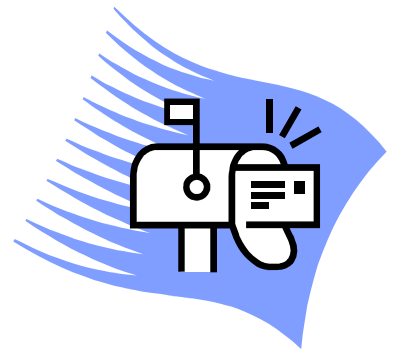
If you think about it, you get e-mail every day that has a spoofed senders address (most phishing scams and spam use spoofed 'From:' addresses) .

Even if you switch to another e-mail address, it's just a matter of time before the new address starts getting used in spoofing scams, so I wouldn't get too carried away with switching e-mail accounts if this is what is happening to you.

Understanding the difference between having your e-mail account compromised and having it spoofed is critical.

If, in fact, your e-mail account has been compromised (even for short period of time) your identity may be at risk.

Any e-mail account that is used in conjunction with an online banking account is the gateway to your personal identity (think about where the reset instructions are sent when you tell your online bank that your forgot your password); if you suspect someone has gained access to an account that you use for banking purposes, be sure to also change the passcodes and review your 'challenge' questions to play it safe!



Any e-mail account that is used in conjunction with an online banking account is the gateway to your personal identity





911 Call to help group

What it costs elsewhere

Geek Squad in home call \$149.00 per hour

Serving Online Seniors in home call \$85.00 per hour

On line help \$79.95 subscription + \$24.95 per month

a gratuity to your SVECC helper is recommended

Name _____ Phone _____

Address _____

Brief problem description

Computer Help Group

Group Leader Joe Zagar

Joe Zagar	480-373-9373	all systems and programs
-----------	--------------	--------------------------

Depending on the season we have a number of helpers to assist with problems or installations. Contact Joe Zagar for assistance, referral, or recommendation of local service provider.

In addition on most Tuesdays from October to March we offer a fix-it session from 1pm to 3pm at the Training Center. Sessions are open to all residents of SVE and are first come first serve. Fee is \$15.00.

Call ahead to see if your problem can be solved at a Tuesday session.



January 2011

SUN	MON	TUE	WED	THU	FRI	SAT
						1
2	3 Computer Club	4 SLUG Meeting 6 to 8 pm	5	6	7	8
9	10 Computer Club	11 Patch Tuesday	12	13	14	15
16	17 Computer Club	18 SLUG Meeting 6 to 8 pm	19	20	21	22
23	24 Computer Club	25	26	27	28	29
30	31 Computer Club					

Smart Computing Tips and Tricks

Skip A Bullet Or Number In Microsoft Word: There can be times when you're working with a bulleted or numbered list when you want to add a new line without tacking on a number or bullet. Perhaps you want to add a parenthetical note below an entry without making it part of your list. If you hold SHIFT and press ENTER, Word will add a new line to your list without a bullet a number. When you want to resume numbering or bulleting, don't hold the SHIFT key any longer.

• **Save The Page:** If you're using Internet Explorer and you come across a Web page with information you want to preserve, there are two good ways to keep the information without having to use a Web browser to bring it back up. The first and simplest way is to print it; it never hurts to have a hard copy of information you need. Another method is to save the Web page as an .MHT (Multipurpose Internet Mail Extension) file, which is essentially just a snapshot of the page. In this format you can send the page to others or double-click on it to open it directly. To make a .MHT file from a Web page, click File (press the ALT key to reveal the File menu if you don't see it), click Save As, and in the dialog box be sure to select the .MHT file type. Tell the computer where to put the file and click Save.

SVECC

Check us out at
svecc.com

President
Delores Bruno

Sunland Village East Computer Club

Founded for the Residents of Sunland Village East

Mission: To help each other learn about Computers

Membership is open to all residents of SVE

Dues are \$20.00 per Year

Due October 1st

Sunland Village East Computer Club



Code Talker

SVECC

Check us out at
svecc.com

People helping
People

